

Power supply unit type Z-3



Power supply unit type Z-3 is an electrical device designed for use in underground mining pits in non-explosive hazard conditions or on the ground.

Power supply unit type Z-3 is designed for connecting and switching on two receivers of protection class II (especially power tools) for the rated voltage of 230 V.

The device is equipped with power protection against short-circuits and overloads and provides possibility of control of ground continuity (protection circuit) which is carried out in supply switchgear.

TECHNICAL DATA:

ingress protection	IP54
rated power supply voltage	500V
rated voltage of outlet	230V
rated power	1000VA, 1600VA, 2500VA, 3200VA
rated outlet current	4,3A, 7,0A, 10A, 10,0A or 16A
number of outlets	2
frequency	50Hz
dimensions	
- with cage suspension gear	1000x700x350mm (height x width x depth)
- without cage suspension gear	700x650x350mm (height x width x depth)
weight	
- with cage suspension gear	50kg
- without cage suspension gear	60kg
maximum cross-section of the power supply cable	up to 6 mm ²

Note: rated power of power tools cannot exceed 10 A.

CONSTRUCTION

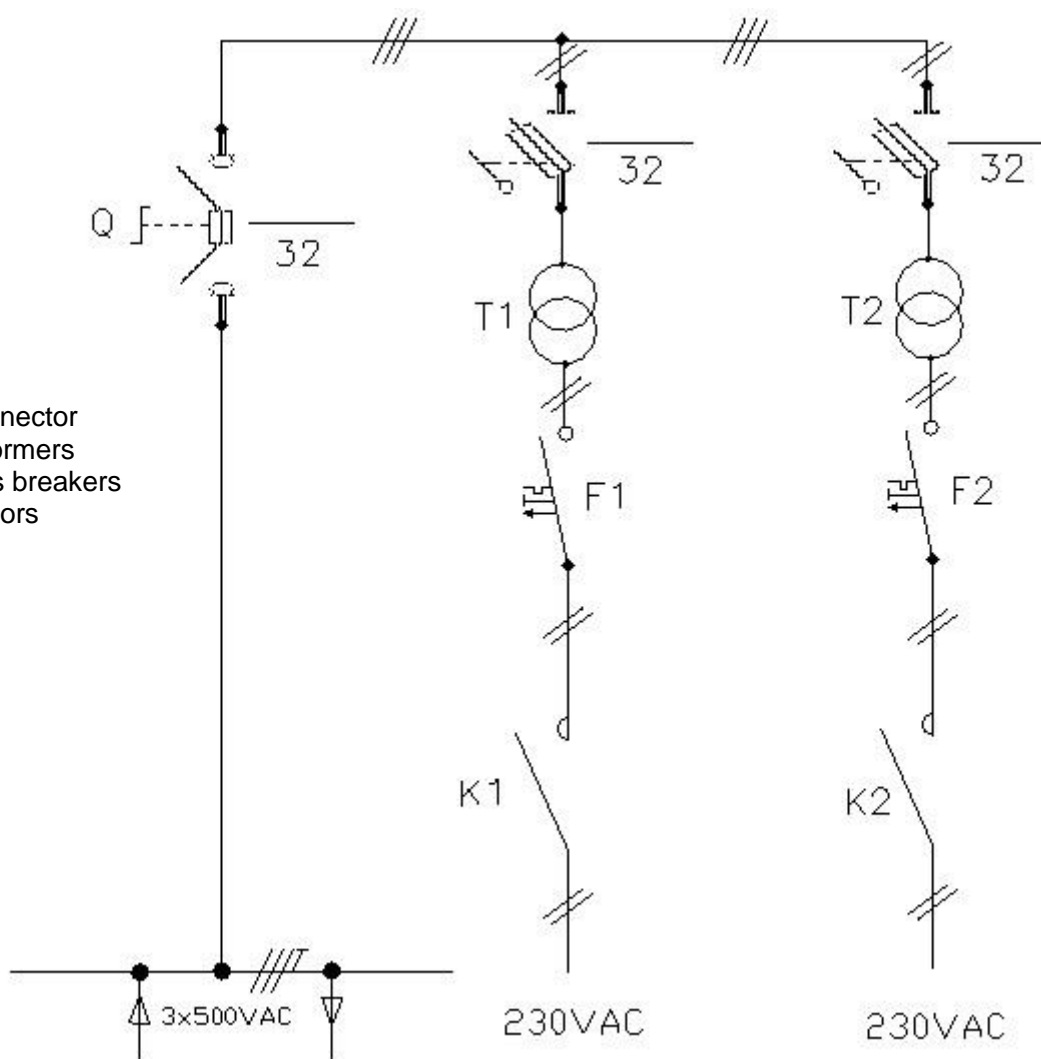
The power supply unit housing is made of steel sheet. The housing is mounted on frame construction in two versions: with or without cage suspension gear. Version with cage suspension gear provides side and back protection against mechanical damages.

MODE OF OPERATION

The control of 230V outlet is carried out with the buttons on the face of the power supply unit. The switching-on of the power supply outlet unit is possible after plugging in to the socket in the power supply unit. Any attempt to unplug causes turning off the power supply unit.

On the 500V side of the power supply unit there is a fuse disconnecter and on the 230V side two outlets equipped with the power protection against short-circuits and overloads. In the 230V outlet circuit electrical separation of the single circuit has been applied in accordance with p.2.9.3 PN-G 50001: 2002 using a separation transformer.

SCHEMATIC DIAGRAM



Legend:

- Q – fuse disconnecter
- T1, T2 – transformers
- F1, F2 – circuit breakers
- K1, K2 – contactors

Orders should be submitted in writing or by fax to the address:

 **Instal-Service PL**

Spółka z ograniczoną odpowiedzialnością
Spółka komandytowa

58-506 Jelenia Góra, ul. Wrocławska 15a
tel. (+48 075) 64-57-950
fax. (+48 075) 64-57-951
e-mail: instal@instal-service.pl